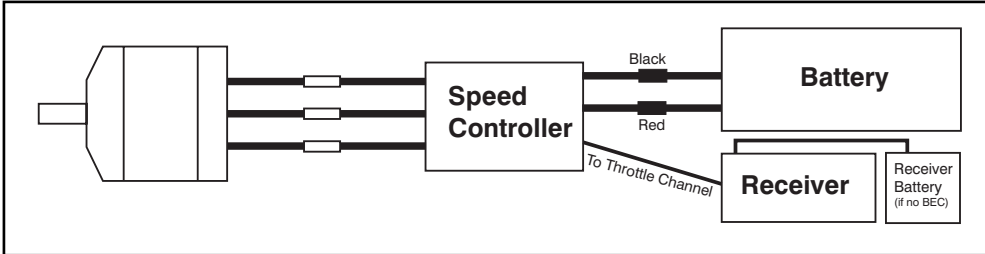
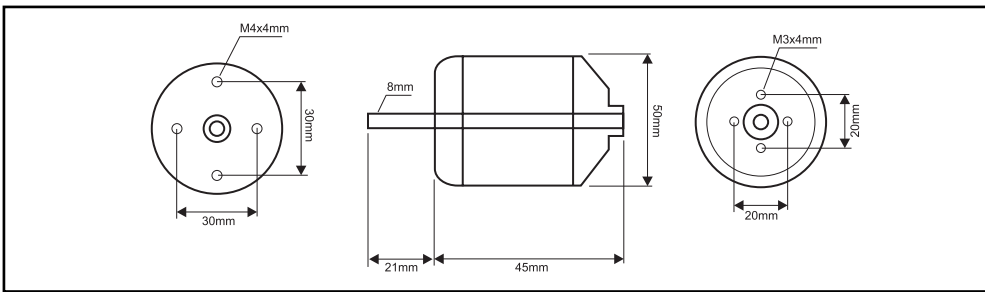


## Lightning 45HS Outrunner Brushless Motor By Skyshark R/C

### Features:

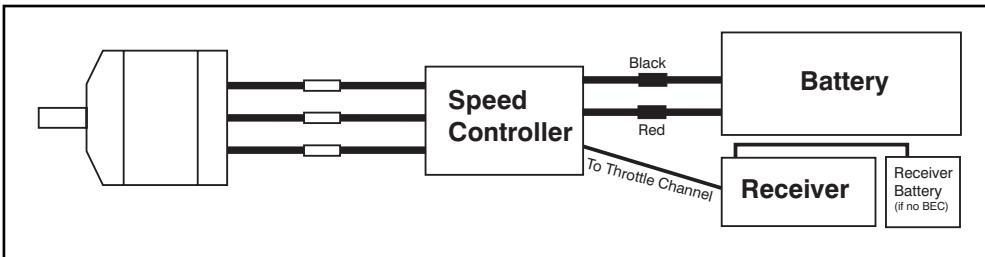
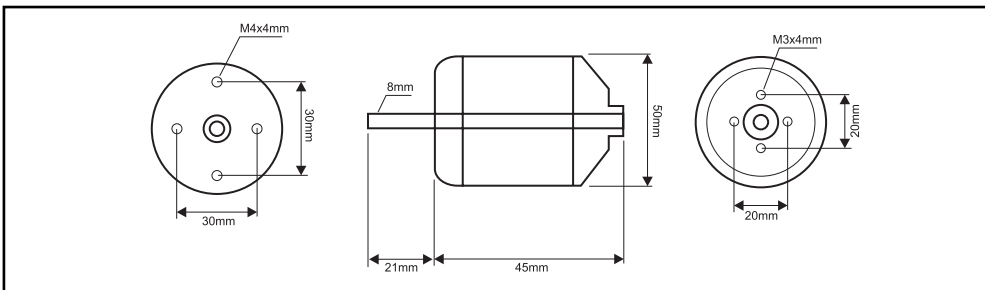
- Front and rear precision ball bearings for better efficiency and stronger performance.
- 81% Efficiency
- Heavy duty 8mm shaft
- High RPM for racing or sport use
- 2 Year Warranty
- 2 Year Crash-Free Guarantee  
(Motor replaced at 50% list price if damaged or crashed)



| Model          | Voltage Range | KV (RPM per Volt) | Weight     | Operating Current | Max Current | ESC    | Battery  |
|----------------|---------------|-------------------|------------|-------------------|-------------|--------|----------|
| Lightning 45HS | 8-21          | 890               | 7.1 ounces | 20 - 55           | 65          | 60 amp | 4-5 LiPo |

### Connecting your motor:

1. Locate the 3 wires and remove the female end of the 4mm connector. Solder the female connectors on to your speed controller wires.
2. If front mounting the motor, connect the wires from your speed controller to the motor wire of the same color.
3. If using the optional motor mounting kit, reverse two wires on your speed controller (eg. the black wire on your speed controller will connect to the yellow motor wire and the yellow speed controller wire will connect to the black motor wire) This will insure the motor operates in the correct direction. You will not damage the motor by connecting the wires wrong. If you find the motor is not operating in the correct direction, simply switch two of the wires. If using a Skyshark Ultra speed controller, you can connect the wires in order and program the motor to run in the correct direction later.
4. Refer to your speed controller documentation for instructions on connecting your speed controller and battery. If you plan to mount this motor to an existing firewall, you will need to purchase the SBA5075 Firewall Mount.



| Model          | Voltage Range | KV (RPM per Volt) | Weight     | Operating Current | Max Current | ESC    | Battery  |
|----------------|---------------|-------------------|------------|-------------------|-------------|--------|----------|
| Lightning 45HS | 8-21          | 890               | 7.1 ounces | 20 - 55           | 65          | 60 amp | 4-5 LiPo |

### Connecting your motor:

1. Locate the 3 wires and remove the female end of the 4mm connector. Solder the female connectors on to your speed controller wires.
2. If front mounting the motor, connect the wires from your speed controller to the motor wire of the same color.
3. If using the optional motor mounting kit, reverse two wires on your speed controller (eg. the black wire on your speed controller will connect to the yellow motor wire and the yellow speed controller wire will connect to the black motor wire) This will insure the motor operates in the correct direction. You will not damage the motor by connecting the wires wrong. If you find the motor is not operating in the correct direction, simply switch two of the wires. If using a Skyshark Ultra speed controller, you can connect the wires in order and program the motor to run in the correct direction later.
4. Refer to your speed controller documentation for instructions on connecting your speed controller and battery. If you plan to mount this motor to an existing firewall, you will need to purchase the SBA5075 Firewall Mount.

## Lightning 45HS Outrunner Brushless Motor By Skyshark R/C

### Features:

- Front and rear precision ball bearings for better efficiency and stronger performance.
- 81% Efficiency
- Heavy duty 8mm shaft
- High RPM for racing or sport use
- 2 Year Warranty
- 2 Year Crash-Free Guarantee  
(Motor replaced at 50% list price if damaged or crashed)

| Lightning 45HS<br>4 cell 14.8 volt Skyshark Ultra LiPo Battery<br>Skyshark Ultra 70 Controller Timing 15 degrees |        |      |       |
|--|--------|------|-------|
| Prop (APC)   | RPM    | Amps | Watts |
| 10 x 6   | 11,900 | 29   | 450   |
| 10 x 8   | 11,100 | 39   | 580   |
| 11 x 6   | 11,000 | 40   | 590   |
| 11 x 8   | 10,200 | 50   | 720   |
| 12 x 6   | 10,100 | 51   | 740   |
| 12 x 8   | 9600   | 56   | 800   |
| 13 x 6   | 9500   | 56   | 800   |
| 13 x 6.5   | 9300   | 61   | 880   |

| Lightning 45HS<br>5 cell 18.5 volt Skyshark Ultra LiPo Battery<br>Skyshark Ultra 70 Controller Timing 15 degrees |        |      |       |
|--|--------|------|-------|
| Prop (APC)   | RPM    | Amps | Watts |
| 9 x 6  | 14,800 | 31   | 575   |
| 10 x 6   | 13,950 | 39   | 700   |
| 10 x 8   | 12,300 | 52   | 900   |
| 10 x 10  | 11,900 | 59   | 1000  |
| 11 x 6   | 12,200 | 53   | 920   |
| 11 x 8   | 11,800 | 66   | 1175  |
| 12 x 5   | 12,100 | 55   | 980   |
| 12 x 6   | 11,700 | 68   | 1220  |

The above numbers are static measurements. In flight, amp draw will decrease approx 10 -15% and RPMs will increase slightly. Shaded area indicates max efficiency - for best performance use these prop sizes. Always use a watt meter to test your system's performance and amp draw before the first flight.

- For maximum power, set your computer radio's throttle setting to 140%
- Use of 30 degree timing on your speed controller will increase the rpm and amp draw and decrease the motor's efficiency
- **Always balance your prop.** Using a prop that is out of balance will cause bearing and shaft damage that is not covered under warranty.



**Skyshark R/C Corporation**  
1924 N. Pima Drive  
Lake Havasu City, AZ 86403  
Tel: (928) 854-6100  
Website: [www.skysharkrc.com](http://www.skysharkrc.com)  
email: [cservice@skysharkrc.com](mailto:cservice@skysharkrc.com)

**Manufacturer's Warranty**

This product is warranted against manufacturer's defects in materials and workmanship for a period of 2 years from the date of purchase. Products covered by this warranty will be replaced at no charge upon inspection of the defective item. Not covered under this warranty are defects resulting from misuse, abuse, modification, alteration or any type of damage. See our website for complete warranty details.

| Lightning 45HS<br>4 cell 14.8 volt Skyshark Ultra LiPo Battery<br>Skyshark Ultra 70 Controller Timing 15 degrees |        |      |       |
|--|--------|------|-------|
| Prop (APC)   | RPM    | Amps | Watts |
| 10 x 6   | 11,900 | 29   | 450   |
| 10 x 8   | 11,100 | 39   | 580   |
| 11 x 6   | 11,000 | 40   | 590   |
| 11 x 8   | 10,200 | 50   | 720   |
| 12 x 6   | 10,100 | 51   | 740   |
| 12 x 8   | 9600   | 56   | 800   |
| 13 x 6   | 9500   | 56   | 800   |
| 13 x 6.5   | 9300   | 61   | 880   |

| Lightning 45HS<br>5 cell 18.5 volt Skyshark Ultra LiPo Battery<br>Skyshark Ultra 70 Controller Timing 15 degrees |        |      |       |
|--|--------|------|-------|
| Prop (APC)   | RPM    | Amps | Watts |
| 9 x 6  | 14,800 | 31   | 575   |
| 10 x 6   | 13,950 | 39   | 700   |
| 10 x 8   | 12,300 | 52   | 900   |
| 10 x 10  | 11,900 | 59   | 1000  |
| 11 x 6   | 12,200 | 53   | 920   |
| 11 x 8   | 11,800 | 66   | 1175  |
| 12 x 5   | 12,100 | 55   | 980   |
| 12 x 6   | 11,700 | 68   | 1220  |

The above numbers are static measurements. In flight, amp draw will decrease approx 10 -15% and RPMs will increase slightly. Shaded area indicates max efficiency - for best performance use these prop sizes. Always use a watt meter to test your system's performance and amp draw before the first flight.

- For maximum power, set your computer radio's throttle setting to 140%
- Use of 30 degree timing on your speed controller will increase the rpm and amp draw and decrease the motor's efficiency
- **Always balance your prop.** Using a prop that is out of balance will cause bearing and shaft damage that is not covered under warranty.



**Skyshark R/C Corporation**  
1924 N. Pima Drive  
Lake Havasu City, AZ 86403  
Tel: (928) 854-6100  
Website: [www.skysharkrc.com](http://www.skysharkrc.com)  
email: [cservice@skysharkrc.com](mailto:cservice@skysharkrc.com)

**Manufacturer's Warranty**

This product is warranted against manufacturer's defects in materials and workmanship for a period of 2 years from the date of purchase. Products covered by this warranty will be replaced at no charge upon inspection of the defective item. Not covered under this warranty are defects resulting from misuse, abuse, modification, alteration or any type of damage. See our website for complete warranty details.